

AFSPB PVC PUMP BASIN

APPLICATIONS

AFS Pump Basins Assemblies are designed to house effluent, sewage ejector, or grinder pumps in wastewater pumping systems.



SPECIFICATIONS

Riser Pipe Material:	24" PVC KOR FLO™ or 30" PVC Perma-Loc™ Ribbed Riser Pipe
Base Material:	FRP encapsulated wood core epoxy bonded to riser pipe
Access Cover Material:	FRP encapsulated wood core with Neoprene gasket and stainless steel fasteners
Basin Capacity:	1.88 gallons/inch

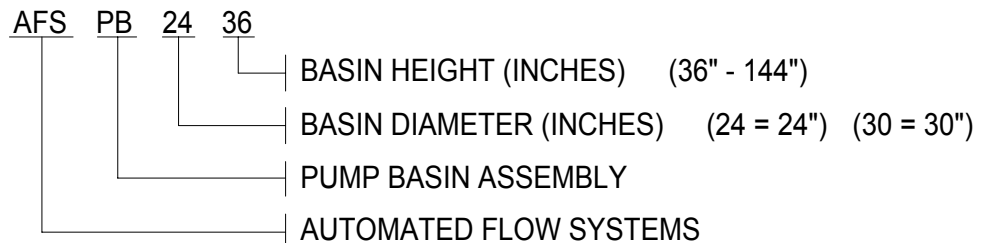
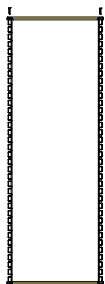
FEATURES

- ◆ Orenco Systems® Inc. molded fiberglass base and access cover with stainless steel lid fasteners and wrench included
- ◆ 24" PVC KOR FLO™ Ribbed Riser Pipe

OPTIONS

- ◆ Available heights from 36" to 144" in 6" increments
- ◆ Insulated lids
- ◆ Float Mounting Bracket & Float Switch Assembly
- ◆ Orenco Systems® Inc. Splice Box (internal or external) installed
- ◆ High Head Turbine Pump Flow Inducer
- ◆ Orenco Systems® Inc. Biotube® Pump Vault
- ◆ 1 1/4" or 2" Discharge Piping
- ◆ 30" PVC Perma-Loc™ Ribbed Riser Pipe

MODEL NUMBERS



AFS

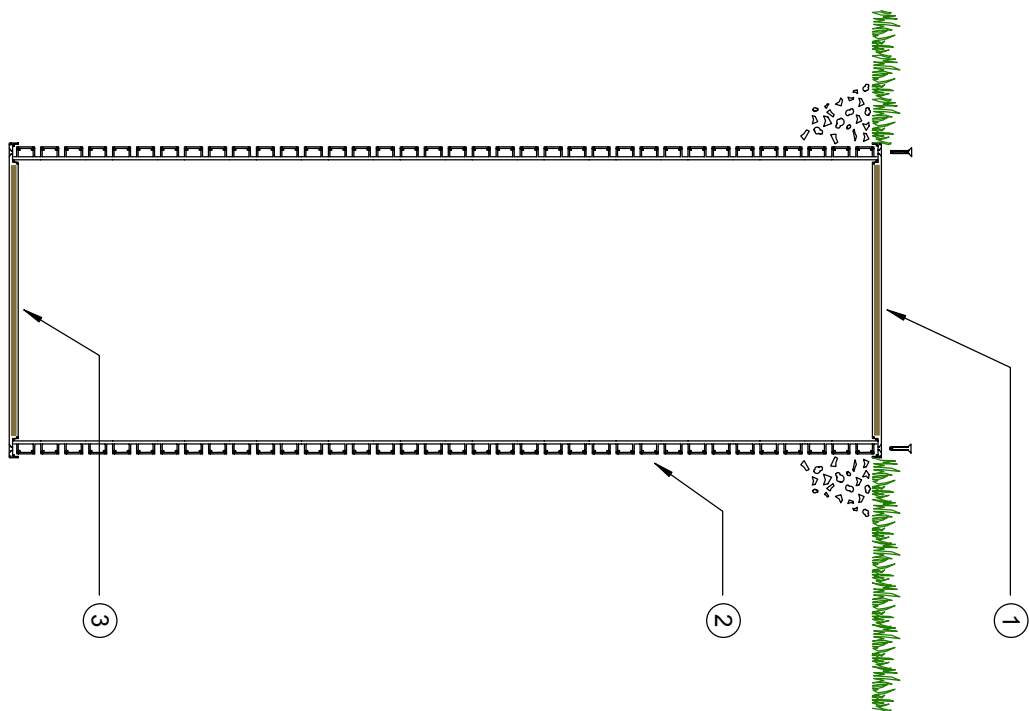
AUTOMATED FLOW SYSTEMS™

BOISE, ID
208.585.9338
208.585.9338 FAX

COEUR D'ALENE, ID
888.809.6778
208.664.2133
208.667.8775 FAX

SPOKANE, WA
800.359.9416
509.534.5616
509.535.6539 FAX

SIDE VIEW



GENERAL NOTES

- ① FIBERGLASS LID W/ TAMPER RESISTANT STAIN-LESS STEEL ANCHORS, AND 2500 LB WHEEL LOAD RATING
- ② 24" X _____" KOR FLO PIPE
- ③ FIBERGLASS BLANK LID EPOXY BONDED

*NOTE: PUMP, PIPING, FLOATS, PANEL, AND ELECTRICAL ACCESSORIES ARE NOT INCLUDED IN PUMP BASIN



BOISE, ID
208-585-9338

COEUR D' ALENE, ID
888-809-6775
208-664-2133

SPOKANE, WA
800-359-9416
509-534-5616

DRAWN BY: KCW

SCALE: NTS

DATE: 06.07.05

VERSION NO. V1.0

AFSPB _____
PVC PUMP BASIN