

AFSTA TANK ASSEMBLIES

APPLICATIONS

AFS Septic Tank Assemblies are ideally suited for use in on-site wastewater treatment systems allowing specification, delivery, and installation of a complete septic tank, effluent filter, and effluent pump system in a convenient manufactured package. Since all components are designed to work together there will be no costly delays trying to integrate incompatible components on the job site.



SPECIFICATIONS

Tank Material:	Fiberglass Reinforced Polyester (FRP)
Tank Capacity:	1000-gallon or 1500-gallon
Tank Configuration:	Single or Dual Compartment
Tank Testing:	All tanks are tested 100% watertight before shipment
Effluent Filter:	Oreco Systems® Inc. Biotube Pump Vault with 24" Filter Cartridge, 1/8" Mesh
Discharge Piping:	200 PSI Rated Hose and Valve Assembly
Maximum Bury Depth:	48" above top of tank

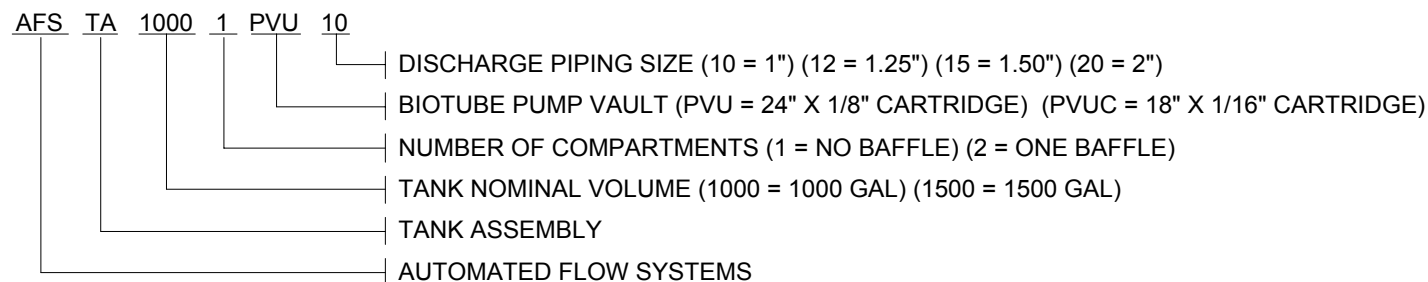
FEATURES

- ◆ Oreco Systems® Inc. FRP Septic Tank
- ◆ Oreco Systems® Inc. Biotube™ Effluent Filters (installed)
- ◆ Schedule 80 PVC Fittings
- ◆ PVC True-Union Ball Valve
- ◆ Flomatic Bronze Check Valves (optional)
- ◆ 200 PSI rated flexible hose designed for use with Oreco Systems® Inc. High Head Pumps
- ◆ AFS Ribbed Risers attach directly to the access openings eliminating the need for any adapters

OPTIONS

- ◆ AFS Ribbed Risers: 18"- 48"
- ◆ Oreco Systems® Inc. P-Series High Head Effluent Pump
- ◆ 1", 1-1/4", 1-1/2" or 2" Discharge Piping
- ◆ Flomatic Bronze Check Valves
- ◆ 1/8" or 1/16" mesh (ideal for dosing drip fields) effluent filter cartridge
- ◆ Single or Dual Compartment tanks
- ◆ 1000 or 1500 gallon tank capacity

MODEL NUMBERS

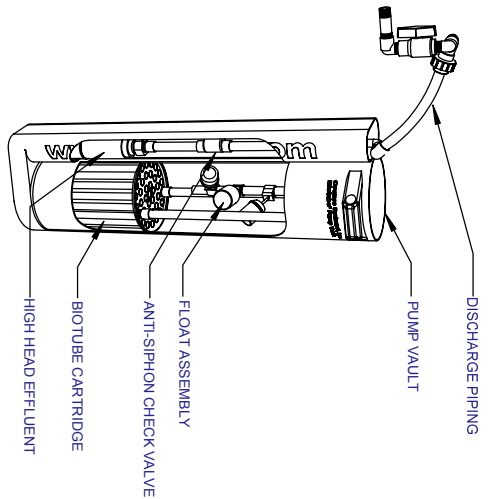
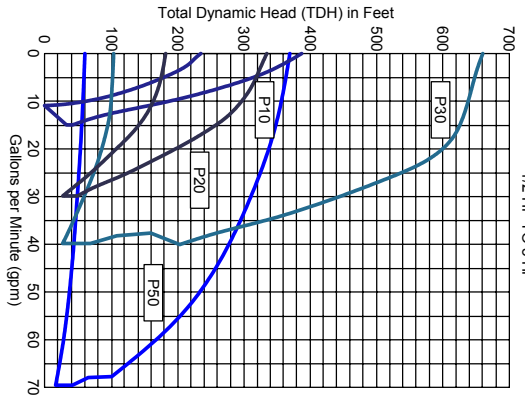


BOISE, ID
208.585.9338
208.585.9338 FAX

COEUR D'ALENE, ID
888.809.6778
208.664.2133
208.667.8775 FAX

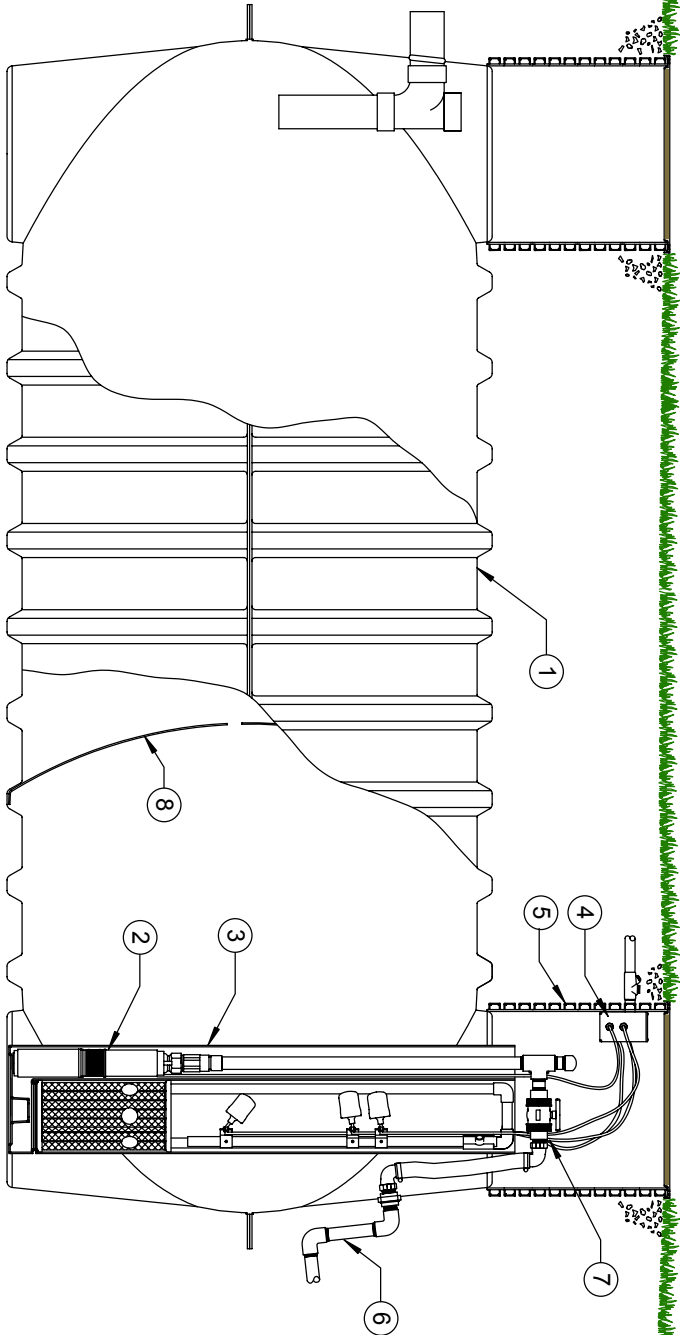
SPOKANE, WA
800.359.9416
509.534.5616
509.535.6539 FAX

ORENCO P10 TO P50 SERIES
1/2 HP TO 5 HP



GENERAL NOTES

- ① ORENCO SYSTEMS® INC. SEPTIC TANK 1000 OR 1500 GAL FRP TESTED AND GUARANTEED WATERTIGHT
- ② ORENCO SYSTEMS® INC. HIGH HEAD EFFLUENT PUMP MODEL _____
- ③ ORENCO SYSTEMS® INC. BIOTUBE PUMP VAULT MODEL _____
- ④ ELECTRICAL SPLICE BOX & REMOTELY MOUNTED CONTROL PANEL
- ⑤ 24" X _____" ACCESS RISER AND FIBERGLASS LID
- ⑥ SCH80 PVC "SWING" JOINT
- ⑦ _____" DISCHARGE PIPING
- ⑧ FIBERGLASS TANK BAFFLE (OPTIONAL)



BOISE, ID
208-585-9338

COEUR D' ALENE, ID
888-809-6775
208-664-2133

SPOKANE, WA
800-359-9416
509-534-5616

DRAWN BY:	KCW
SCALE:	NTS
DATE:	05.24.05
VERSION NO.	V1.0

AFSTA _____
AFS TANK ASSEMBLIES